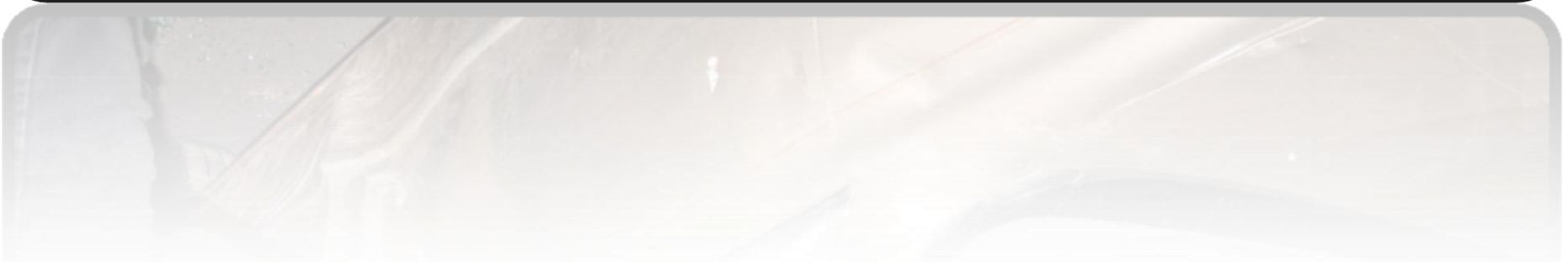


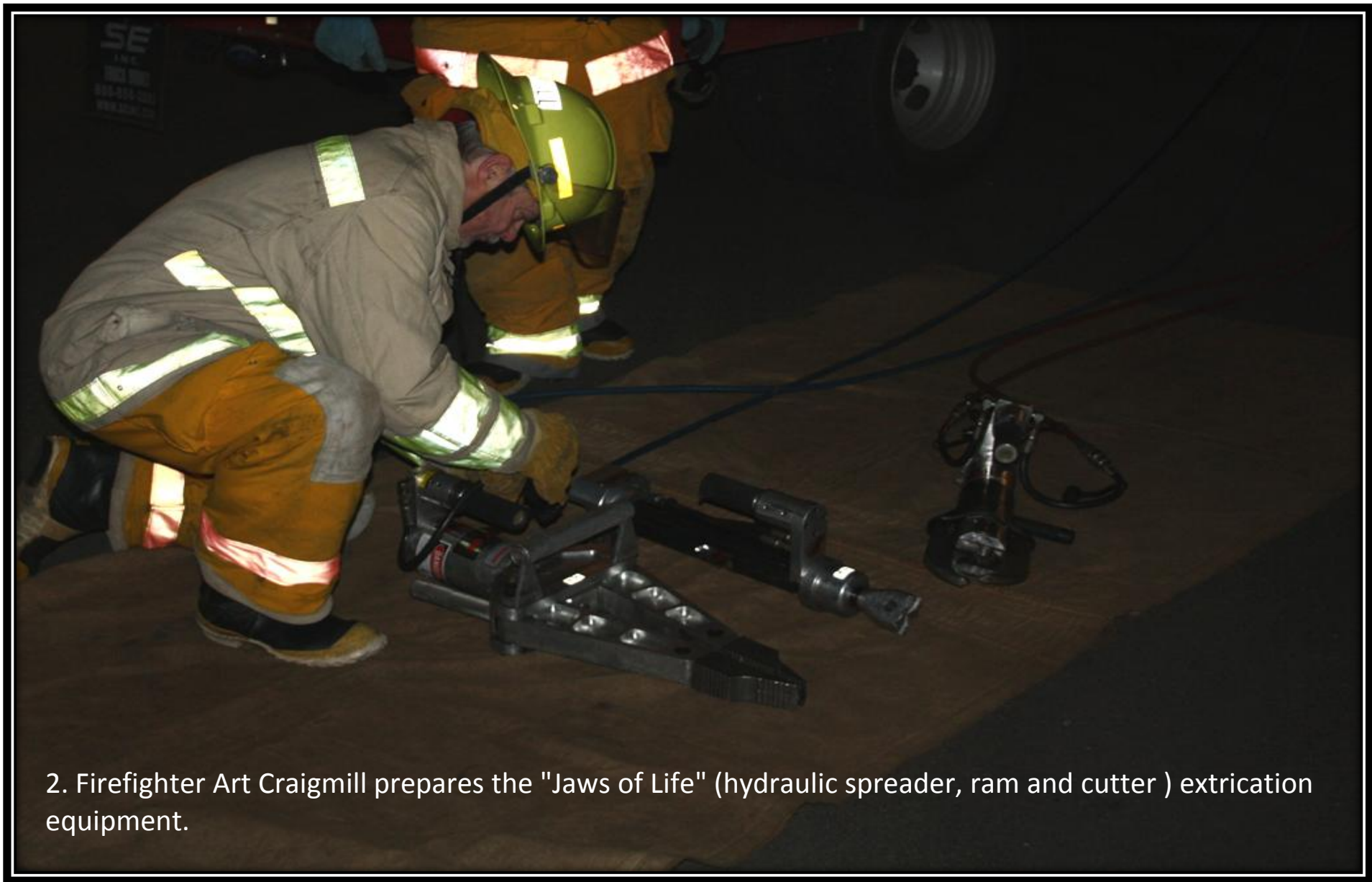
**DOHFD Vehicle Extrication Training  
January 19, 2011**

Having the latest in equipment and the training to use it are key to providing the residents of the Dobbins/Oregon House Fire Protection District the best possible care in a medical first response. Here the firefighters and EMTs can be seen training with the newest version of the Jaws of Life. In this training exercise a victim is pinned in his vehicle and needs to be removed in the most careful way possible so as to avoid further injury. The Jaws of Life quickly “open” the car like a tin can to provide the access the firefighters need to immobilize the victim prior to taking him out of the car.

Photos by Bart Young  
Text by Art Craigmill  
Web layout by Mike Hatherly

**1 - Assistant Chief Mark Claar and Lt. Joe Cruz set up for the extrication exercise where Joe will be the victim needing extrication after a vehicle accident.**





2. Firefighter Art Craigmill prepares the "Jaws of Life" (hydraulic spreader, ram and cutter ) extrication equipment.



3. Firefighter Mitch Monroe and Cadet Johnny Graham starting up the gas powered hydraulic pump



4. Firefighter/EMT Roy Young was given the job as IC (Incident Commander) for the extrication exercise under the direction of Training Officer Lt. Mike Bernardis. Note inside the car FF/EMT Scott DeAlba has broken out a back window, entered the car, stabilized the victims neck and covered the victim with a blanket.



5. FF/EMTs DeAlba and Art Craigmill place a cervical stabilization collar (also known as a C-spine) on the victim to prevent and further damage to vertebrae.



6. FF/EMT Jacob Rust applies the spreader to the front door to force it open.



7. FF Monroe cuts away the windshield with a handsaw specially designed for the job. This job can be done in less than a minute.



8. The windshield "flap" is turned over as the door removal proceeds. The entire windshield may be cut out if necessary.





9. After cutting the post connecting the roof to the frame, the roof is folded upwards to provide access to the victim (covered with maroon blanket).



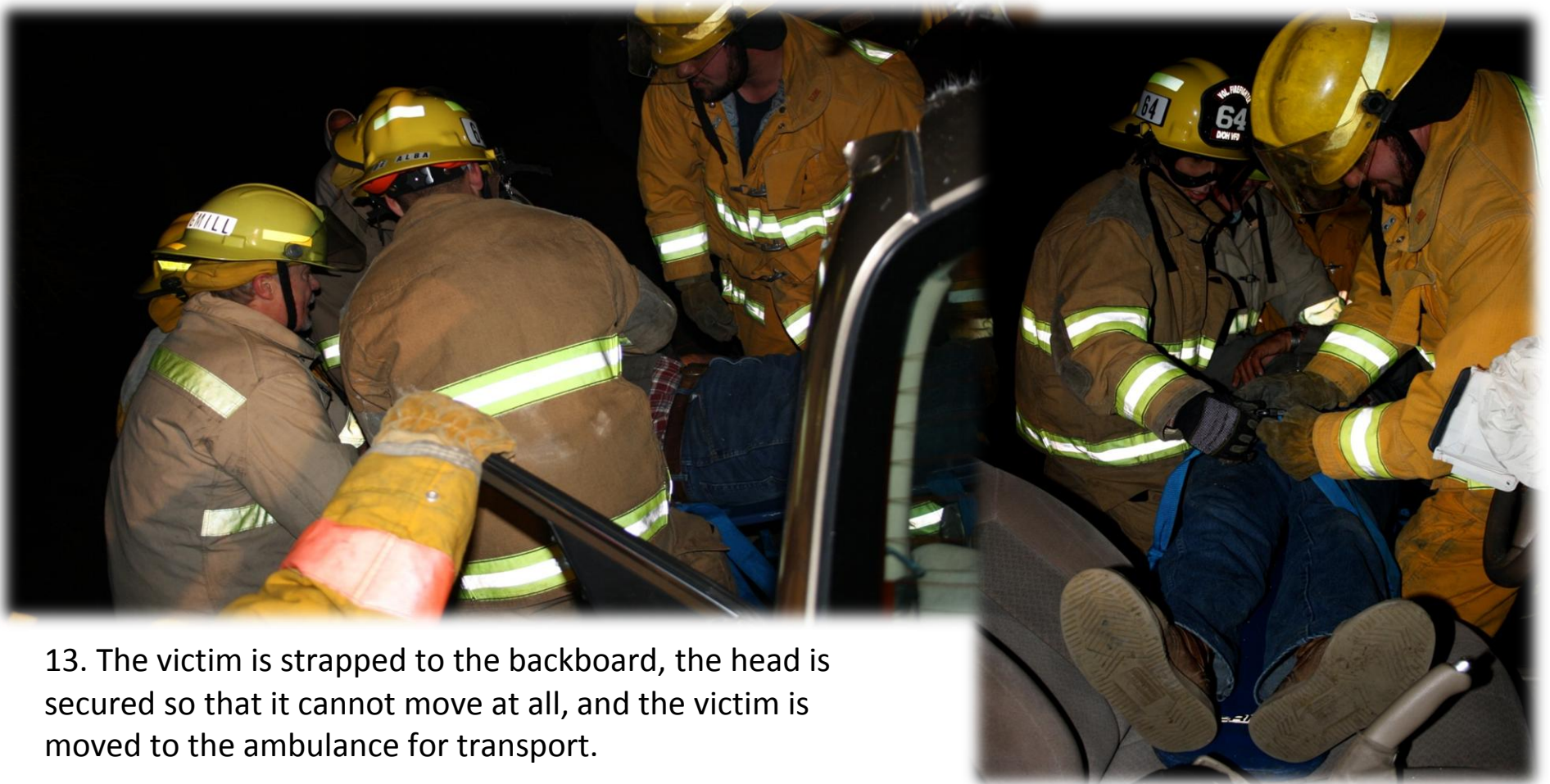
10. FF/EMT Young continuing to fold roof upwards as FF/EMT Craigmill uses cutter to cut through the post on the other side of windshield.



11. The rear door is removed using the cutter and spreader. (This was done as part of the training and would probably not be necessary to remove a single victim.)



12. While maintaining "in-line" spinal stabilization, a rigid backboard is slipped under the victim, and the victim is prepared to be placed on the board.



13. The victim is strapped to the backboard, the head is secured so that it cannot move at all, and the victim is moved to the ambulance for transport.